

Design Construction of Low Cost Multifacility Cybercrime Station and Individual Home

Gopikumar S¹, Sharma Ankit R², Sheela Daniel R³

^{1,2,3}Department of Civil Engineering, SCAD College of Engineering and Technology, Tirunelveli, Tamil Nadu, India-627414

Abstract—The main aim of this study is to design, to make a prototype model on multifacility cyber crime station and Individual home.

Keywords—Design, prototype, model.

I. INTRODUCTION

It remains our constant endeavour to push forward the vision of creating an empowered nation. In human society problems regarding properties, child labour, smuggling etc can be faced. A society or area with protection facilities is only accepted as residency. India is also most famous country in the field of irrigations but somewhere India lacking due to child labour, poverty, in rural areas. Survey shows that in large no. Considering the fact, Plan to be build under the government sector within short period. It is a big project and lack of awareness will be canvas to people. In regard giving solutions to the scheme, we have planned to design in precast RCC. The structure is a socio-economic, zero emission and energy producing design. For a large number of manufacturing it needs more time and budget. But we have a new idea to solve this problem. It can be made in readymade precast RCC Structures.

Home is at the heart of sustainable development, critical for economic development, environmental sustainability and human wellbeing. The reality is that many of the most vulnerable around the globe still struggle to find a reliable residency. As populations grows, the demand on home increases.

Refugees are seen as temporary populations and are consequently provided limited emergency and short-term assistance. The average time someone will spend as a refugee is nearing 20 years. Hence a low cost model for individual private residency is planned. Residential Life fosters safe and inclusive living and learning environments beyond the classroom to holistically develop responsible global citizens.

1.1 Literature

Home has been the centre and instrument for mankind's moral and material progress ever since the advent of civilization. Since home life affects the very foundation of an individual's life, the house becomes an integral part of it. The first step in house construction is collecting money to own a house. These days one need not have ready cash to start house construction. There are many financing institutions which give a helping hand in fulfilling one's dream of owning a house. This is a topic on which many studies have not been done in our country. The available literature is reviewed under the following heads. Importance of housing, problems, shortages, cost effectiveness, environment awareness and various sources

of housing finance, urbanization approach, effects of decentralization and the developmental efforts for the future housing sector.

The National Housing Policy, "shelter is a basic human need and as an intrinsic part of human settlement, is closely linked with the process of overall socioeconomic development. Though a house is essentially a place of dwelling, it also fulfils many important social needs of the household. Besides providing shelter, it creates employment.

Home has been the centre and instrument for mankind's moral and material progress ever since the advent of civilization. Since home life affects the very foundation of an individual's life, the house becomes an integral part of it. The first step in house construction is collecting money to own a house. These days one need not have ready cash to start house construction. There are many financing institutions which give a helping hand in fulfilling one's dream of owning a house. This is a topic on which many studies have not been done in our country. The available literature is reviewed under the following heads. Importance of housing, problems, shortages, cost effectiveness, environment awareness and various sources of housing finance, urbanization approach, effects of decentralization and the developmental efforts for the future housing sector.

The National Housing Policy, "shelter is a basic human need and as an intrinsic part of human settlement, is closely linked with the process of overall socioeconomic development. Though a house is essentially a place of dwelling, it also fulfils many important social needs of the household. Besides providing shelter, it creates employment.

1.2 Objectives

1. To promote modern and scientific handling system to people.
2. To involve the first move towards the crime free society.
3. To Ensures sustainability of the project at the local level.
4. To coordinate and evaluate progress in energy production.
5. To reduce the crime impacts sites from the nearby infection problems.
6. To promote low cost housing system
7. To Ensures sustainability of the project at the local level
8. To reduce the environmental impact of housing and make them suitable for people living in slum, refugee camp.
9. Low maintenance cost.

II. MATERIALS AND METHODS

A. Methodology

A prototype model as per the design has been prepared based on the task scheduled for crime station.

Task-1	Fix location for construction.
Task-2	Collection of construction material and find resources of material.
Task-3	To make Base and ground slab with column.
Task-4	Develop column in height and build partition wall in r/f concrete.
Task-5	Build roof slab, provide water tank.
Task-5	Plumbing, plastering.
Task-6	Painting, wastage box fitting, finishing.

A prototype model as per the design has been done based on the task scheduled.

Task-1	Select location for construction.
Task-2	Collection of construction material and find resources of material.
Task-3	Excavation for foundation
Task-4	Laying stone foundation
Task-5	Brick work
Task-6	Door & window placing
Task-7	Plumbing
Task-8	Roof and floor construction
Task-9	Plastering and finishing

III. RESULT AND DISCUSSION

Cyber crime station design prototype model shown in figure. 1



Fig. 1.

Work Plan: Proposed Structure details (All dimensions are in inch)

Type, Structure and Model	RCC, Constructed and Portable
Structure size	(20*15) m
Column Size	0.20 m
No. of Doors	16
No. of Windows	18
No. of Slabs	12
Type of Slab	Two Way Slab
No. of Columns	20
Ht. of 1 st Floor	3.95m
Ht. of 2 nd Floor	3.70m

Budget Particulars (In Rupees)

A. Non-Recurring (e.g. equipments, accessories, etc.)

S. No.	Item	Week 1	Week 2	Week 3	Week 4	Week 5
1	Solar Panel	4600	-	-	-	-

Sub-Total (A) = 4,600

B. Recurring

B.1 Consumables

S. No.	Item	Quantity	Week 1	Week 2	Week 3	Total
1	Cement	8 Bag	3200	-	-	3200
2	Aggregate	150 kg	4000	-	-	4000
3	Plumbing	-	1000	-	-	1000
4	Door	16	1700	-	-	1700
5	Painting	-	1000	-	-	1000
6	Steel	42 kg	3500	-	-	3500

Sub-Total (B.1) = 14,400

Other items

B.2 Contingency	1000
B.3 Overhead Charges	1000
Sub-Total (B = B.1 + B.2 + B.3)	16,400
Grand Total (A + B)	19,000



Fig. 2. Proposed prototype model.

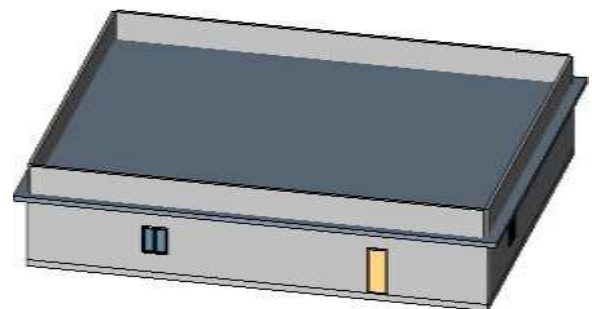


Fig. 3. Proposed prototype model.

Work Plan: Proposed Structure details (All dimensions are in feet)

Type, Structure and Model	Low cost Housing plan
Structure plan size	18'x16'
Structure height	12'
Precast base floor slab size	4'x6'x2"
No .of precast slab	28

BUDGET PARTICULARS (IN RUPEES)

S.No	Description	Quantity required	Rate per quantity	Amount (Rs)
1	Earth work excavation	30.63m ³	101.5	3105.
2	P.C.C	7.06m ³	1401	9891.
3	Footing	25.3m ³	1475	37317.
4	Brick work	7.15m ³	1700	12155
5	RCC roof slab	5.76m ³	1800	10368
6	Sand filling	20.44m ³	360	7358.
7	Plastering	270m ²	66	17820
			Total amount:	98000/-

ACKNOWLEDGMENT

Authors are thankful to SCAD College of Engineering and Technology for financial assistance for this project work and for technical support in framing this paper.

REFERENCES

- [1] Krishna Raju, "Structural Design and Drawing Reinforced Concrete and Steel," 2009.
- [2] B. C. Punmia, *Theory of Structure*, Lakshmi Publications, New Delhi, 2000.
- [3] IS 456-2000 "Plain and Reinforced Concrete Code of Practice".
- [4] SP 16 "Design Aids for Reinforced Concrete".
- [5] IS 875-1987 Part 1&2"Design of "Loads for building".